

# **Human Services Coordinated Transportation Plan**

**Update for  
Fiscal Year 2009**



The preparation of this document has been financed in part by the U.S. Department of Transportation, and prepared by the staff of the North Central Alabama Regional Council of Governments in cooperation with the Transportation Planning & Modal Programs Bureau of the Alabama Department of Transportation

Prepared September 2008

# Table of Contents

- Purpose of the Plan ..... 3
- Methodology ..... 3
- Plan Update..... 4
- Area Analysis..... 5
- Planning Process ..... 6
- Vision Statement..... 6
- Goals ..... 6
- Identification of Current Transportation Services in the Region..... 7
  - Cullman Area Rural Transit System (C.A.R.T.S) ..... 7
  - Lawrence County Aging – Rural Transit System (LC-ARTS)..... 10
  - Morgan County Area Transportation System (M.C.A.T.S)..... 12
  - Other Transportation Service Providers in the Region ..... 14
- Identification of and Strategies to address Unmet Needs and Coordination Opportunities ..... 16
- Identification of Projects..... 22
- Public Review ..... 23
- Adoption of the Plan ..... 23
- Appendix A..... 24
  - Public Meeting Documents..... 24
  - Maps..... 34
- RESOLUTION ..... 38

## **Purpose of the Plan**

In August of 2005, Congress passed the Safe, Accountable, Flexible, Efficient, Transportation Equity Act: A Legacy for users (SAFETEA-LU). This Reauthorization Act required the development of a coordinated human service transportation plan in order to be eligible for certain federal funds (Section 5310 – Elderly Individuals and Individuals with Disabilities, Section 5316 – Job Access and Reverse Commute, and Section 5317 – New Freedom Initiative). The coordinated plan is expected to be derived from input from private, nonprofit transportation and human services providers and the general public.

The purpose of the Human Services Coordinated Transportation Plan (HSCTP) is to improve transportation services for persons with disabilities, older adults, and individuals with lower incomes by ensuring that communities coordinate transportation resources provided through multiple federal programs.

This update is a continuation of the HSCTP process in coordination with the Alabama Department of Transportation (ALDOT) and the Alabama Department of Senior Services (ADSS). ALDOT has retained oversight for 5310 funds in the state of Alabama, while ADSS will oversee 5316 and 5317 funds. The regional councils of Alabama have been contracted to ensure that local grant applicants for Section 5310, Section 5316, and Section 5317 funds are included in the HSCTP. To further this effort, NARCOG staff requested input from various local providers through surveys. A stakeholders meeting was held on August 20, 2008.

## **Methodology**

The SAFETEA-LU legislation did not specify who was responsible for developing the Human Services Coordinated Transportation Plan, so the Alabama Department of Transportation (ALDOT) contracted with the Alabama Association of Regional Councils (AARC) in June, 2006 to develop 12 Regional Human Services Coordinated Transportation Plans (HSCTP) for the State of Alabama by January 15, 2007. The North Central Alabama Regional Council of Governments (NARCOG) is one of the 12 members of the AARC and has developed this plan for the North Central Alabama Region (Cullman, Lawrence and Morgan Counties).

A seven-step planning process was followed to develop the Human Services Coordinated Transportation Plan (HSCTP). The steps included (1) development of a vision statement. (2) development of goals. (3) identification of current transportation services in the region. (4) identification of and strategies to address unmet needs and coordination opportunities. (5) identification of projects. (6) public review. (7) final adoption of the plan. These planning processes are explained in further detail on page 5 in the planning process section of this document.

The staff of the North Central Alabama Regional Council of Governments (NARCOG) distributed news releases, legal ads in local papers, web site announcements and flyers to promote and announce all public meetings concerning the development of this plan. The staff

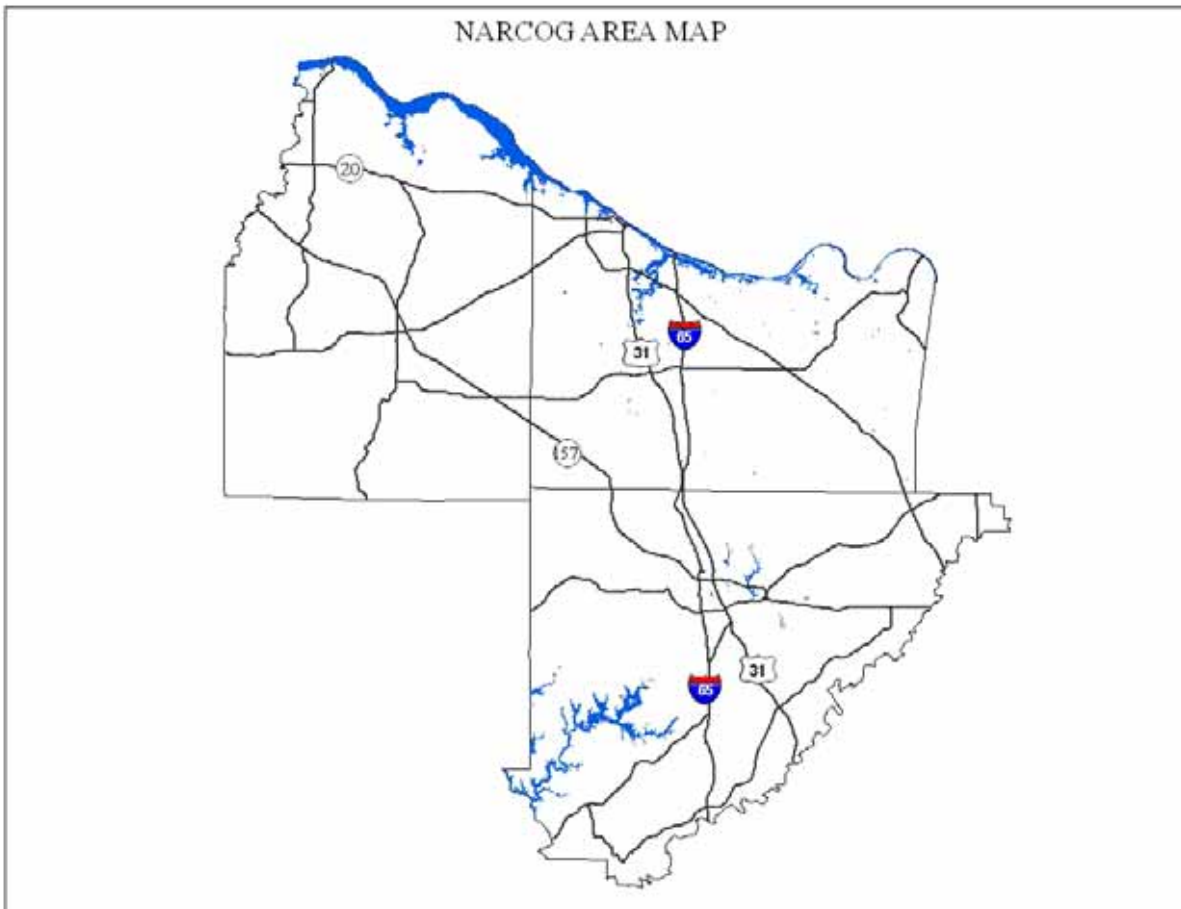
wanted to give the general public all reasonable opportunities for input on the development of each of the planning processes in the plan. The staff also worked closely with the Regional Stakeholders Group which included the following: local services providers, human service transportation providers, agencies that have contact with disabled individuals, elderly groups, medical groups and low/moderate income groups in the region to gather information and recommendations for the plan. The public meeting schedule is explained in greater detail in the Plan Development and Public Review Section of this document.

## **Plan Update**

The Alabama Department of Transportation (ALDOT) again contracted with the Alabama Association of Regional Councils (AARC), of which the North Central Alabama Regional Council of Governments (NARCOG) is a member, to update the Human Services Coordinated Plan (HSCP) in 2008. NARCOG staff distributed surveys and invitations to a stakeholders meeting to numerous stakeholders in the region (full list of stakeholders available in the appendix). The Stakeholders' meeting was held on August 20th, 2008 at the Hartselle Civic Center. The comments from the Stakeholders' meeting and completed surveys have been incorporated into this update.

## Area Analysis

The North Central Alabama Region consists of Cullman, Lawrence and Morgan Counties in North Central Alabama. This region has a total land area of 2,013 square miles and a total population of 223,350 according to the 2000 census. 98,867 commute to work daily with 83,074 (84%) of those driving to work alone according to the 2000 census. The regions major roadways include Interstate 65, U.S. Highways 31, 72, 278, 231, and State Routes 24, 36, 67, 69, 157 and 33. The region also has abundant water resources including the Tennessee River and Smith Lake. The region also contains three general aviation airports and an international airport located nearby in Huntsville. The region also has numerous taxi services currently operating in the region.



## **Planning Process**

Successful coordination of transportation services depends on an effective planning process that establishes a clear vision and sets goals and objectives that are tailored to the North Central Alabama Region. The Planning Process will incorporate the following steps for the development of the Human Services Coordinated Transportation Plan:

- a) development of a vision statement
- b) development of goals
- c) identification of current transportation services in the region
- d) identification of and strategies to address unmet needs and coordination opportunities
- e) identification of projects
- f) public review
- g) final adoption of the plan

These Planning Process Steps were developed by the Regional Stakeholders Group and the General Public and are explained in greater detail in the following sections of this document.

## **Vision Statement**

The staff of the North Central Alabama Regional Council of Governments worked with the Regional Stakeholders Group (human service providers, transit providers, elderly, public, etc.) to develop the following Vision Statement for the Human Services Coordinated Transportation Plan:

*We envision an efficient, coordinated transit system, where the local transit providers and human service organizations work together to meet the transportation needs of the people of North Central Alabama.*

## **Goals**

The North Central Alabama Regional Stakeholders Group developed the following Goals for the Human Services Coordinated Transportation Plan:

### **Goal 1: Enhance Transportation Access**

It is the goal of the Regional Stakeholders Group and the North Central Alabama Regional Council of Governments to enhance transit services in the North Central Alabama region through the coordination of existing and future transit services.

### **Goal 2: Minimize Duplication**

It is the goal of the Regional Stakeholders Group and the North Central Alabama Regional Council of Governments to minimize the duplication of transit services in the North Central Alabama region through coordination of existing and future transit services.

### Goal 3: Provide Cost-Efficient Transit Services

It is the goal of the Regional Stakeholders Group and the North Central Alabama Regional Council of Governments to develop the most cost-efficient transit system possible in the North Central Alabama through the coordination of existing and future transit services.

Central to these goals will be the emphasis on cooperation and coordination among transportation service providers, regional and state transportation agencies, city and county governments and eligible clients. This plan will incorporate the coordination and development polices that will both eliminate overlapping services and fill gaps where services in the region are lacking.

## **Identification of Current Transportation Services in the Region**

The North Central Alabama Region is served by three main transit service providers. The Cullman Area Rural Transit System (C.A.R.T.S) serves Cullman County. The Lawrence County Aging – Rural Transit System (L.C.-A.R.T.S) serves Lawrence County and the Morgan County Area Transportation System (M.C.A.T.S) serves Morgan County. These main providers’ services along with all other human service providers’ services are described in further detail below:

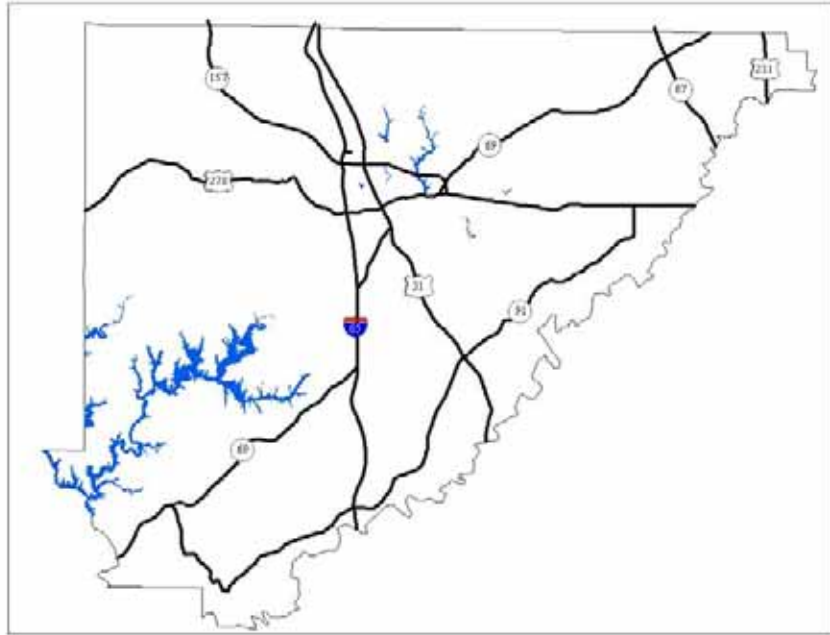
### **Cullman Area Rural Transit System (C.A.R.T.S)**

The Cullman Area Rural Transit System (C.A.R.T.S) operates services throughout Cullman County. The following is current information and services provided by C.A.R.T.S.

#### Service Area and Scheduling

The C.A.R.T.S service area is all of Cullman County. Presently all CARTS routes are Demand/Response. The CARTS system also has four Contract Routes which are coordinated with Demand/Response.

### C.A.R.T.S Service Area



#### Days and Hours of Operation

CARTS is currently open Monday thru Friday from 7:30 am till 4:00 pm

#### Vehicles, Para Transit and Drivers

CARTS currently has thirty three (33) vehicles. Sixteen of these vehicles are lift equipped and seventeen are not lift equipped. CARTS is a rural system provider and is not required to operate Para transit services. The CARTS currently has six (6) full time driver and no volunteers.

#### Fares

Fares vary, based on location and distance from the City of Cullman with distribution at one way fares of \$5.00 for one way over fifteen (15) miles, \$4.00 for one way fares from eight (8) to fifteen (15) miles, \$2.00 one way fares from zero (0) to seven (7) miles, and \$1.00 in town. Elderly and disabled riders receive a fifty percent (50%) discount.

#### Ridership Totals, Service Miles and Service Hours

The following are totals for Fiscal Year 2008

|                   |         |
|-------------------|---------|
| Ridership Totals  | 53,803  |
| Service Miles     | 371,447 |
| Fuel Gallons Used | 56,320  |

Social Service Providers / Transportation Services

CARTS provides transportation services on a daily basis to the Department of Human Resources (DHR), Mental Health, Community Action, and the Center for the Developmentally Disabled and the Commission on Aging.

Service Access

CARTS requires that anyone wanting to ride the transit system must call and schedule an appointment no later than 2:30 pm the day before the appointment.

Special Events

CARTS provides transportation services for special events as long as the event does not interfere with the normal daily service operations. Special rates do apply to these services.

Funding Types and Amounts for Fiscal Year Requested 2009:

FY 2009 Operating Budget

|                        |           |
|------------------------|-----------|
| Farebox                | \$60,495  |
| Contract Revenue       | \$110,000 |
| 5311 Funds             | \$242,940 |
| County                 | \$242,940 |
| Total Operating Budget | \$656,376 |

FY 2009 Administrative Budget

|                             |           |
|-----------------------------|-----------|
| 5311 Funds                  | \$214,532 |
| Local Share                 | \$53,632  |
| Total Administrative Budget | \$268,164 |

FY Total Operations Budget

|              |           |
|--------------|-----------|
| Total Budget | \$924,540 |
|--------------|-----------|

CARTS Contact Information

Mailing Address:

CARTS

P.O. Box 2518

Cullman, Al. 35056

Telephone: 256-734-1246

Website: <http://www.co.cullman.al.us/carts.htm>

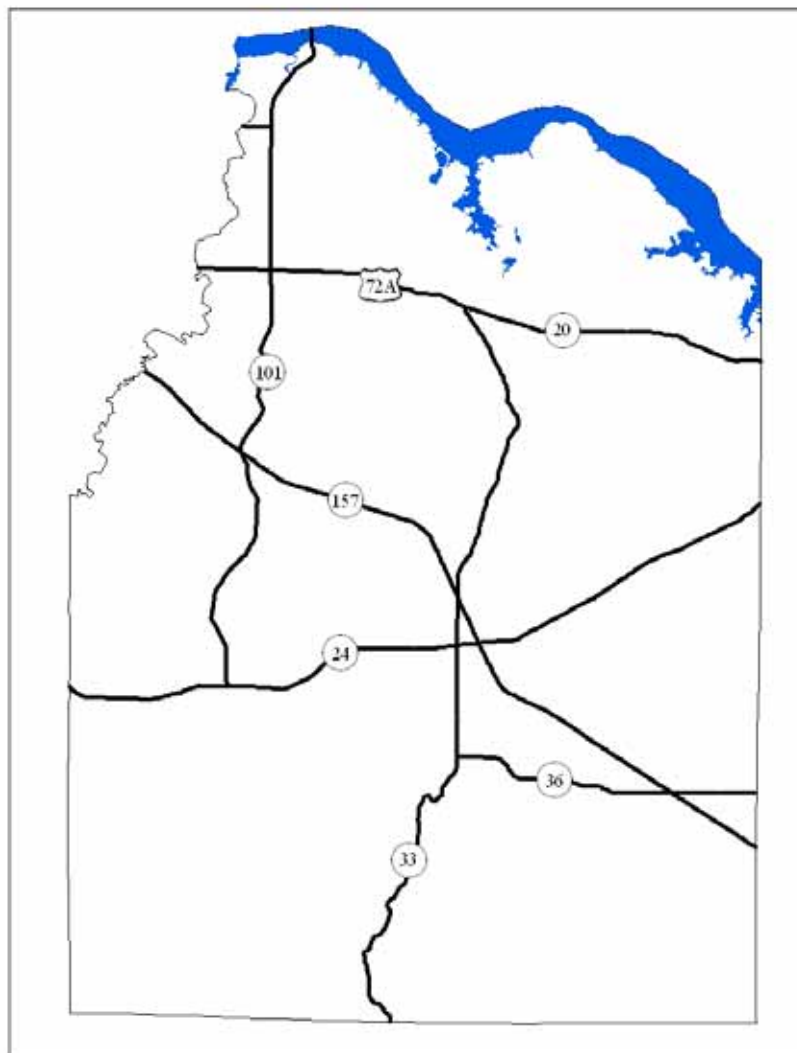
## **Lawrence County Aging – Rural Transit System (LC-ARTS)**

The Lawrence County – Aging Rural Transit System (LC – ARTS) operates services throughout Lawrence County. The following is current information and services provided by LC – ARTS.

### **Service Area and Scheduling**

The LC-ARTS service area is all of Lawrence County with the exception of some medical trips into Morgan County. Presently all LC – ARTS routes are Demand / Response and require a twenty four (24) hour advance notice.

Lawrence County Aging – Rural Transit System Service Area



Days and Hours of Operation

LC – ARTS is currently open Monday thru Friday from 6:00 am till 3:00 pm.

Vehicles, Para Transit, Drivers

LC – ARTS currently operates sixteen (16) vehicles. LC – ARTS is a rural transit provider and is not required to operate Para transit services. The LC – ARTS currently has 9 full time drivers and no volunteers.

Fares

Fares for the LC - ARTS are based on the following:

| Miles    | Costs                  |
|----------|------------------------|
| 0 to 6   | \$5.00 + \$.10 / Mile  |
| 7 to 22  | \$7.00 + \$.10 / Mile  |
| 23 to 45 | \$15.00 + \$.10 / Mile |
| 46 to 60 | \$20.00 + \$.10 / Mile |
| 61 to 80 | \$24.00 + \$.10 / Mile |

These fares are based on one (1) stop per passenger with each additional stop costing .50 cents. Medical trips to Decatur costs \$40.00 plus \$.10 per mile and only run on Thursdays. The LC – ARTS accepts Medicaid Vouchers and Ride n Stop Vouchers.

Ridership Totals, Daily Service Miles and Daily Service Hours

The following are totals for October 1, 2007 to August 2008:

|                  |         |
|------------------|---------|
| Ridership Totals | 26,877  |
| Vehicle Miles    | 148,212 |
| Service Hours    | 15,576  |

Social Service Providers / Transportation Services

LC – ARTS provides transportation services on a daily basis to the Department of Mental Health, the Department of Aging along with providing clients access to dialysis centers and medical centers in Lawrence County as well as the City of Decatur in Morgan County.

Service Access

LC – ARTS requires that anyone wanting to ride the transit system must call and schedule an appointment no later than twenty four (24) hours in advance.

Special Events

LC – ARTS provides transportation services for special events as long as the event does not interfere with the normal daily service operations. Special rates do apply to these services.

Funding Types and Amounts for FY 2006

| Funding Source                     | Amount    |
|------------------------------------|-----------|
| Lawrence County Commission         | \$95,000  |
| CAC Head Start                     | \$49,058  |
| Lawrence County Board of Education | \$38,231  |
| Mental Health                      | \$16,748  |
| Fare Box Revenue                   | \$12,150  |
| Earned Interest                    | \$200     |
| Federal Grant                      | \$167,342 |
| Other Revenue                      | \$67,595  |
| Total                              | \$446,324 |

LC-ARTS Contact Information

Mailing Address:

LC-ARTS

P.O. Box 305

Moulton, Al 35650

Telephone: 256-974-2488

**Morgan County Area Transportation System (M.C.A.T.S)**

The Morgan County Area Transportation System (M.C.A.T.S) operates the urbanized (5307) and non-urbanized (5311) public transit services throughout Morgan County. The following is current information on services provided by MCATS.

Service Area and Scheduling

The MCATS service area encompasses all of Morgan County. Presently all MCATS routes are Demand / Response and the system has four contract routes that are also coordinated with demand response.

M.C.A.T.S Service Area



Days and Hours of Operation

MCATS is currently open Monday thru Friday from 7:30 am to 4:00 pm.

Vehicles, Para Transit and Drivers

MCATS currently has twenty nine (28) vehicles with six (6) of them being lift equipped for Para transit use. MCATS currently has 24 drivers.

Fares

MCATS currently charges \$1.00 per one way trip within the City of Decatur and \$2.00 per one way trip in the rural areas or between the Cities of Hartselle and Decatur.

Ridership Totals, Revenue Miles and Revenue Hours

The following are totals for Fiscal Year 2008:

|                  |         |
|------------------|---------|
| Ridership Totals | 189,696 |
| Revenue Miles    | 497,616 |
| Revenue Hours    | 25,296  |

Social Service Providers / Transportation Services

MCATS provides transportation services daily to Terrell Industries, Decatur Morgan County Mental Health Center, Department of Human Resources (DHR), Commission on Aging Senior Centers and the Community Action Agency.

Service Access

MCATS requires that anyone wanting to ride the transit system must call and schedule an appointment no later than 2:00 pm the day before the appointment.

### Special Events

MCATS provides transportation services for special events as long as the event does not interfere with the normal daily operating schedule.

### Funding Types and Amounts for FY 2009

MCATS currently has two different federal funding sources for the transit system. The Section 5307 Urbanized Area Formula Program Grant is used for Operating, Planning and Capital projects in the Decatur Urbanized Area. The Section 5311 Non – Urbanized Area Formula Program Grant is used for Operating, Administrative and Capital Projects in the Non – Urbanized Area of Morgan County. The funding sources for the Grant Programs are illustrated in the following table.

#### FY 2009 Total Budget

| FY 2009 Budget | 5311      | 5307      | Total       |
|----------------|-----------|-----------|-------------|
| Operations     | \$361,327 | \$671,035 | \$1,032,362 |
| Administration | \$44,917  | \$83,419  | \$128,336   |
| Totals         | \$411,555 | \$759,761 | \$1,160,698 |

### MCATS Contact Information

Mailing Address:

MCATS

P.O. Box 668

Decatur, Al 35602

Telephone: 256-351-4650

Website: <http://www.co.morgan.al.us/mcats.htm>

### **Other Transportation Service Providers in the Region**

#### Ability Plus, Inc

Ability Plus, Inc. (API) serves Limestone, Madison, Morgan, and St. Claire counties in North Alabama. API provides door-to-door transportation services to existing clients using 18 passenger cars and 13 passenger vans. 5310 funding is used for these vehicles.

### Contact Information

Ability Plus, Inc  
4440 Evangel Cir  
Huntsville, Al 35816  
Telephone: 256-489-4696

### The ARC of Morgan County

The ARC of Morgan County transports it's clients in one van equipped with a lift. These clients participate in the programs offered by ARC on Wednesdays. ARC has applied for a 5310 grant for FY 2008 are unsure if funding will be provided.

### Contact Information

The ARC of Morgan County  
401 14<sup>th</sup> St SE, Bldg 4E  
Decatur, AL 35601  
Telephone: 256-355-6192

### Boys and Girls Club of Morgan and Lawrence Counties

The Boys and Girls Club of Morgan and Lawrence Counties service inner-city, low-income children with two vans. They provide after school activities for these children at four locations in the City of Decatur.

### Contact Information

Boys and Girls Club of Morgan and Lawrence Counties  
P.O. Box 1431  
Decatur, AL 35602  
Telephone: 256-340-3470

### Centers for the Developmentally Disabled, North Central Alabama

The Centers for the Developmentally Disabled of North Central Alabama (CDDNCA) uses eight vans and buses to transport their clients to employment opportunities in the Decatur area. Three of the vehicles are equipped with lifts for wheelchair bound clients. CDDNCA is a grant recipient of Federal 5310 funds.

### Contact Information

Centers for the Developmentally Disabled of North Central Alabama  
P.O. Box 2091  
Decatur, AL 35602  
Website: <http://www.cddnca.org/index.htm>

Telephone: 256-350-1458

There are many service providers in Cullman, Lawrence, and Morgan County. The service providers included above participated in the stakeholders' meeting or return a completed survey and are currently involved in paratransit services. The completed surveys are on file at NARCOG and available upon request.

## **Identification of and Strategies to address Unmet Needs and Coordination Opportunities**

This step of the planning process was developed with the assistance of the Regional Stakeholders Group as well as the General Public. The NARCOG staff distributed a "*Regional Transportation Needs Survey Form*" and a "*Regional Transportation Services Inventory Sheet*" to the Regional Stakeholders Group in the form of a mail out that explained the Human Services Coordinated Transportation Plan as well as inviting them to the Regional Stakeholders Meeting held on August 20, 2008 at the Hartselle Civic Center. These forms were also available at the Regional Stakeholders Meeting for input from the General Public. The NARCOG staff facilitated the Regional Stakeholders Meeting and explained the purpose of the plan in detail using a power point presentation. The Stakeholders Meeting was an interactive meeting using a "*Community Assessment Meeting Record*" to ask the following questions to the group about transportation services in the region:

- 1) Things done well
- 2) Things that could be done better
- 3) Contributing Factors
- 4) How it can be Accomplished
- 5) Responsible Parties
- 6) Time Frame
- 7) Priority

The NARCOG staff also presented the following Maps (located in Appendix A) at the Stakeholders Meeting to assist in the development of the Plan:

- 1) Public Transportation Origins and Destinations – This Map included the following information to assist in the development of this Plan:

|                       |  |
|-----------------------|--|
| Hospitals             | Health Departments                                     |
| Nursing Homes         | Major Employers >200 employees (Retail and Non-Retail) |
| Senior Centers        | Minor Manufacturing and Retail                         |
| Daycare Facilities    | Schools  |
| Dialysis Centers      | Social Service Agencies                                |
| Transit Service Areas |  |

- 2) Median Household Income – This Map included income ranges from the 2000 Census Block Group data to determine Low to Moderate Income Groups in the North Central Alabama Region.
- 3) Percentage of Population over 60 years old – This Map included population densities of people 60 and over based on 2000 Census Block Group data. This data was used to help determine gaps in service and potential transit clients.
- 4) Percentage of Households without Automobiles – This Map included the percentage of households without automobiles for the region based on the 2000 Census Block Group data. This data was used to determine gaps in service as well as potential transit clients

The questions and answers from the Stakeholders Meeting, *the Regional Transportation Needs Survey, the Regional Stakeholders Inventory Sheet, and the Community Assessment Meeting Record* provided the following information concerning Unmet Needs, Coordination Opportunities, as well as Strategies to address these issues.

#### Things done Well

- a) Transit Providers communicate well with the Public
- b) The Demand / Response System is working well
- c) Coordination of Special Events
- d) Coordination of Contract Services
- e) Coordination of Services with the Center for the Developmentally Disabled of North Central Alabama (CDD) the Decatur Mental Health Center for North Alabama, as well as others in the region.
- f) Provides service to disabled and handicapped clients
- g) Provides a variety of service with a small amount of funding
- h) Provides service to large geographical areas
- i) Reliable and Efficient staff and volunteers
- j) Reliable and Safe Equipment

#### Things that could be done better (Unmet Needs)

1. More Service including expanded services areas and more transit vehicles.

#### Contributing Factors

- a) Limited funding from state and local officials
- b) Funding can only be used for replacement vehicles. This limits expansion of the current fleet as well as extending the service area.

How it can be accomplished?

- a) More funding from state and local officials
- b) Expand the current grant program guidelines to include funding for the purchase of new vehicles as well as replacement vehicles
- c) Educate federal, state and local officials on the importance of transit programs in the region

Responsible Parties

- a) State and Local Officials
- b) Human Transportation Service Providers
- c) Metropolitan Planning Organization (MPO)
- d) Rural Planning Organization (RPO)
- e) State Department of Transportation
- f) State Department of Senior Services

Timeframe

Priority

Ongoing

High

2. Extended Hours and Days.

Contributing Factors

- a) Limited funding from state and local officials
- b) Shortage of drivers and volunteers

How it can be accomplished?

- a) More funding from state and local officials
- b) More funding for new drivers
- c) Recruiting more volunteers
- d) Educational and promotional advertisements about the operations of transportation provider services in the region

Responsible Parties

- a) Human Service Transportation Providers
- b) State and Local Officials
- c) State Department of Transportation



- a) Limited funding
- b) Limited resources (Vehicles, Drivers)
- c) Routing conflicts
- d) Limited information about transit services

How can it be accomplished?

- a) More funding from state and local officials
- b) Increased fleet sizes
- c) Increased drivers
- d) Increased hours of operation
- e) Increased days of operation
- f) Coordination of a centralized routing and scheduling center
- g) Education and promotional advertising about transit services

Responsible Parties

- a) Human Service Providers
- b) State and Local Officials
- c) State Department of Transportation
- d) Medical Providers

Timeframe

Priority

Ongoing

High

5. More communication between Human Service Providers, State Officials, Local Officials and the General Public.

Contributing Factors

- a) Knowledge about provider services
- b) Knowledge about funding programs

How can it be accomplished?

- a) Education by providers in schools, industries, civic groups and public meetings
- b) Education by providers to state and local officials about different funding programs

Responsible Parties

- a) Human Services Providers
- b) Metropolitan Planning Organization (MPO)
- c) Rural Planning Organization (RPO)

Timeframe

Priority

Ongoing

High

6. Coordination of services at common areas.

Contributing Factors

- a) Lack of service at common destinations such as employment centers, medical centers and shopping districts

How can it be accomplished?

- a) Fixed Routes from origins to destinations
- b) Coordination with industries, medical facilities and retail centers
- c) More funding for fixed route services

Responsible Parties

- a) Human Service Providers
- b) Local Industries
- c) Local Medical Facilities
- d) Local Retail Centers
- e) State and Local Officials

Timeframe

Priority

Ongoing

High

7. Establishment of Work Related Transit Services

Contributing Factors

- a) Lack of coordination

- b) Lack of JARC funding / applicants
- c) Lack of funding
- d) Lack of van pools
- e) Lack of funding for low income car ownership programs

How can it be accomplished?

- a) Coordination between service providers and local industries
- b) Applying for more JARC funding for work related transit services
- c) Education and promotional advertising of work related transit services
- d) Increased funding at the state and local levels
- e) Working with local industries to develop van pool programs and rideshare programs in the region
- f) Development of park and ride facilities
- g) Education and promotion of car ownership programs to vehicle donors
- h) Additional funding for car loan pool programs
- i) Setup and maintain regional low income car ownership offices

Responsible Parties

- a) Human Service Providers
- b) Local Industries
- c) State Officials
- d) Local Officials
- e) Metropolitan Planning Organization (MPO)
- f) Rural Planning Organization (RPO)
- g) Chamber of Commerce

Timeframe

Priority

Ongoing

High

**Identification of Projects**

Future funding for 5310, 5316, and 5317 funding is based upon participation in the planning process and availability of federal, state, and/or local funding.

## **Public Review**

The NARCOG staff held a public meeting to provide the general public an opportunity to participate in the development of the plan. The public stakeholder meeting was held on August 20, 2008 at the City of Hartselle City Hall. The NARCOG staff also developed and disbursed news releases, legal ads, web site announcements and flyers throughout the region to promote and announced this meeting. The materials from the public meeting are included in Appendix A. The plan is also posted on the NARCOG website [www.narcog.org](http://www.narcog.org).

## **Adoption of the Plan**

The NARCOG staff reviewed the comments received at the Regional Stakeholders Public meeting and provided its recommendations regarding the comments to the NARCOG Board. The NARCOG board met and endorsed the plan on September 24, 2008. The plan was submitted to the Alabama Department of Transportation in September 2008.

# Appendix A

## Public Meeting Documents

### Decatur Daily Legal Advertisement

**PUBLIC NOTICE**  
A Coordinated Human Services Transportation meeting will be held on August 20th, 2008 from 10:00 am to 11:00 am at the Hartselle Civic Center. The meeting will include a regional assessment on public transit human services transportation coordination from all transportation providers and stakeholders in attendance. Anyone requiring special assistance to attend this meeting should contact the NARCOG no later than twenty four hours prior to the meeting. For more information please call NARCOG at (256)355-4515.  
8/17 6903

Regional Stakeholders Meeting Sign-in Sheet

Human Services Coordinated Transportation Plan  
Regional Meeting Participant List

Region: North Central Alabama      Facilitators: NARCOG      Date: 8-20-2006

| Participant Name  | Agency                | Address  | E mail Address                   |
|-------------------|-----------------------|--|----------------------------------|
| Sandra Rhoades    | AL Career Center      | Po Box 1105 Cullman, AL  | Sandra.rhoades@adock.alabama.gov |
| Linda Pitts       | Terrell Ind.          | Po Box 1574 Hartselle AL   | terrellindustrie@bellsouth.net   |
| Bonnie Yabys      | CARIS                 | P.O. Box 2518 Cullman  |                                  |
| Shirley Kenna     | CAITS                 | P.O. Box 2578 Cullman<br>35816 Humbleville AL                              | SKenna@co.cullman.al.us          |
| Doug Bunker       | Ability Plus          | 4440 Evansville Circle<br>401 14th Street SE, Bldg 4E<br>Decatur, AL 35607 | gary.burke@ability-plus.org      |
| Ashley Braswell   | The Arc of Morgan Co  | 200 Sparkman St<br>Hartselle, AL   | Karenatmorganarc@bellsouth.net   |
| Dwight Tankersley | City of Hartselle     | 302 Fivith Ave NE<br>DECATUR, AL 35602                                     | dtankersley@hartselle.org        |
| Ramsay HUFFMAN    | DECATUR City Schools  | 1325 Park Main<br>Decatur AL   | Ramsay.Huffman@DCS.EDU           |
| Bruce Winbren II  | Morgan Co. schools    | P.O. Box 1758<br>Decatur, AL 35602   | BruceWinbren@msk12.org           |
| Gayle Pitts       | Univ of Wyo Morgan Co |  | gpitts@unmc.edu                  |

Regional Stakeholders Meeting Invitation



**North-central Alabama Regional  
Council of Governments**

216 Jackson Street, S.E. • Decatur, Alabama 35601  
Telephone 256-355-4515 • Fax 258 351-1380  
C. Ronald Matthews, AICP, Executive Director

Dear Friend of Transportation:

In August of 2005, Congress passed the Safe, Accountable, Flexible, Efficient, Transportation, Equity Act: A legacy for Users (SAFETEA – LU), reauthorizing the surface transportation act. As part of this reauthorization, grantees under the New Freedom Initiative, Job Access and Reverse Commute (JARC) and Elderly and Disabled Transportation Program (5310) must meet certain requirements in order to receive funding for fiscal year 2009 (beginning 10/1/08) and beyond.

One of the SAFETEA – LU requirements is that projects from the programs listed above must be part of a “locally developed coordinated public transit-human services plan.” This plan is required to be developed through a process that includes representatives of public, private, and non-profit transportation services, human service providers and the general public.

For 5310, New Freedom, and JARC grantees to continue to receive funding in 2009, the Alabama Department of Transportation and the North Central Alabama Regional Council of Governments are updating the Regional Coordinated Public Transit – Human Services Transportation Plan.

As part of this plan a regional meeting for Cullman, Lawrence and Morgan Counties is scheduled for August 20, 2008 from 10:00 to 11:00 pm at the Hartselle Civic Center. This meeting will include completing an assessment of human transportation coordination services within each county, the level of coordinating between transportation programs, and developing an action plan for strategies and steps for improving coordinating efforts.

Your attendance is extremely important to this process and your input is a requirement to receive funding under these programs. If you cannot attend this planning meeting, please return the completed Transportation Services Inventory Worksheet and the Transportation Needs Worksheet to NARCOG 216 Jackson St SE, Decatur, AL 35601. If you are attending the planning meeting please bring the completed worksheets with you to the meeting.

Please RSVP to this meeting by calling (256) 355 – 4515 ext 236 or e-mail [cherri.blankenship@adss.alabama.gov](mailto:cherri.blankenship@adss.alabama.gov) . We look forward to seeing you on August 20, 2008.

Sincerely,

Dewayne Hellums, Director of Transportation Planning

Attachments: Meeting Flyer for posting and distribution  
Transportation Services Inventory Worksheet  
Regional Transportation Needs Worksheet



## **Regional Coordinated Public Transit Human Services Planning Meeting**

**August 20, 2008**

**Hartselle Civic Center**

**From 10:00 am to 11:00 am**

The meeting will include a regional assessment on public transit human services transportation coordination from all transportation providers and stakeholders in attendance. Anyone requiring special assistance to attend this meeting should contact the NARCOG no later than twenty four hours prior to the meeting. For more information please call NARCOG at (256)355-4515.

Regional Transportation Services Inventory

Region Transportation Services Inventory

The purpose of this worksheet is to provide information on the transportation services provided in each region by program. Kind of vehicle including accessibility, ride schedules, and funding sources. If you cannot attend the region planning meeting, please complete this worksheet and return it to the individual who invited you to the meeting. If you are attending the meeting bring a completed copy so a master list of this information can be compiled. Each transportation provider in the region completes this worksheet. Thanks!

| Program Name / Sponsoring Agency Program Eligibility                        | Type of Vehicles (Bus, Vans, Volunteers) (Show # of Vehicles) | Scheduling (Check all that apply)  | Days and Hours of Operation                | Lift or Ramp Equipped (# of Vehicles) | How To Access   | Funding Sources   |
|---|---|--|--|---------------------------------------|---|---|
| Name:<br>Address:<br>Phone:<br>Contact Person:<br>Eligibility Restrictions: |   | Fixed Route <input type="checkbox"/><br>Demand Response <input type="checkbox"/><br>Other (Explain) <input type="checkbox"/> | Weekdays<br>Saturday<br>Sunday<br>Holidays | Lifts<br>Ramps<br>None                | Fixed Routes <input type="checkbox"/><br>Call for each ride <input type="checkbox"/><br>Subscription <input type="checkbox"/><br>Other <input type="checkbox"/> | 85.21<br>85.20<br>5307<br>5311<br>5310<br>Older Am.Act<br>VA<br>Med Assis.<br>JARC/WETAP<br>Other |
| Name:<br>Address:<br>Phone:<br>Contact Person:<br>Eligibility Restrictions: |   | Fixed Route <input type="checkbox"/><br>Demand Response <input type="checkbox"/><br>Other (Explain) <input type="checkbox"/> | Weekdays<br>Saturday<br>Sunday<br>Holidays | Lifts<br>Ramps<br>None                | Fixed Routes <input type="checkbox"/><br>Call for each ride <input type="checkbox"/><br>Subscription <input type="checkbox"/><br>Other <input type="checkbox"/> | 85.21<br>85.20<br>5307<br>5311<br>5310<br>Older Am.Act<br>VA<br>Med Assis.<br>JARC/WETAP<br>Other |

## Regional Transportation Needs Survey

### **Regional Transportation Needs Survey**

The purpose of this survey is to provide information on any under served population and/or areas, any underutilized transportation services, and any overlapping transportation services. If you cannot attend the regional meeting please complete this survey and return to NARCOG. If you are attending the meeting please bring a completed copy so a master list of this information can be compiled.

Organization Name: \_\_\_\_\_

1. Are there any specific geographic areas, currently not served by any transportation service that your patrons typically live/work?
  
2. If you are considered a destination (i.e. Senior Centers, Dialysis, Medical Center, etc.) for low-income, elderly or disable citizens, please describe the geographic areas where trips bound for your destination typically originate?
  
3. If you are a transportation provider, please detail the capacity of your routes or service areas?
  
4. In your next year, do you plan on applying for any federal funding for transportation? If yes, how much, under what category of funding, and for what?
  
5. In the next year, do you have any capital improvements not proposed to be funded with federal funds?
  
6. Please list any pertinent information you feel we should be made aware of:



## Stakeholders Invitation List

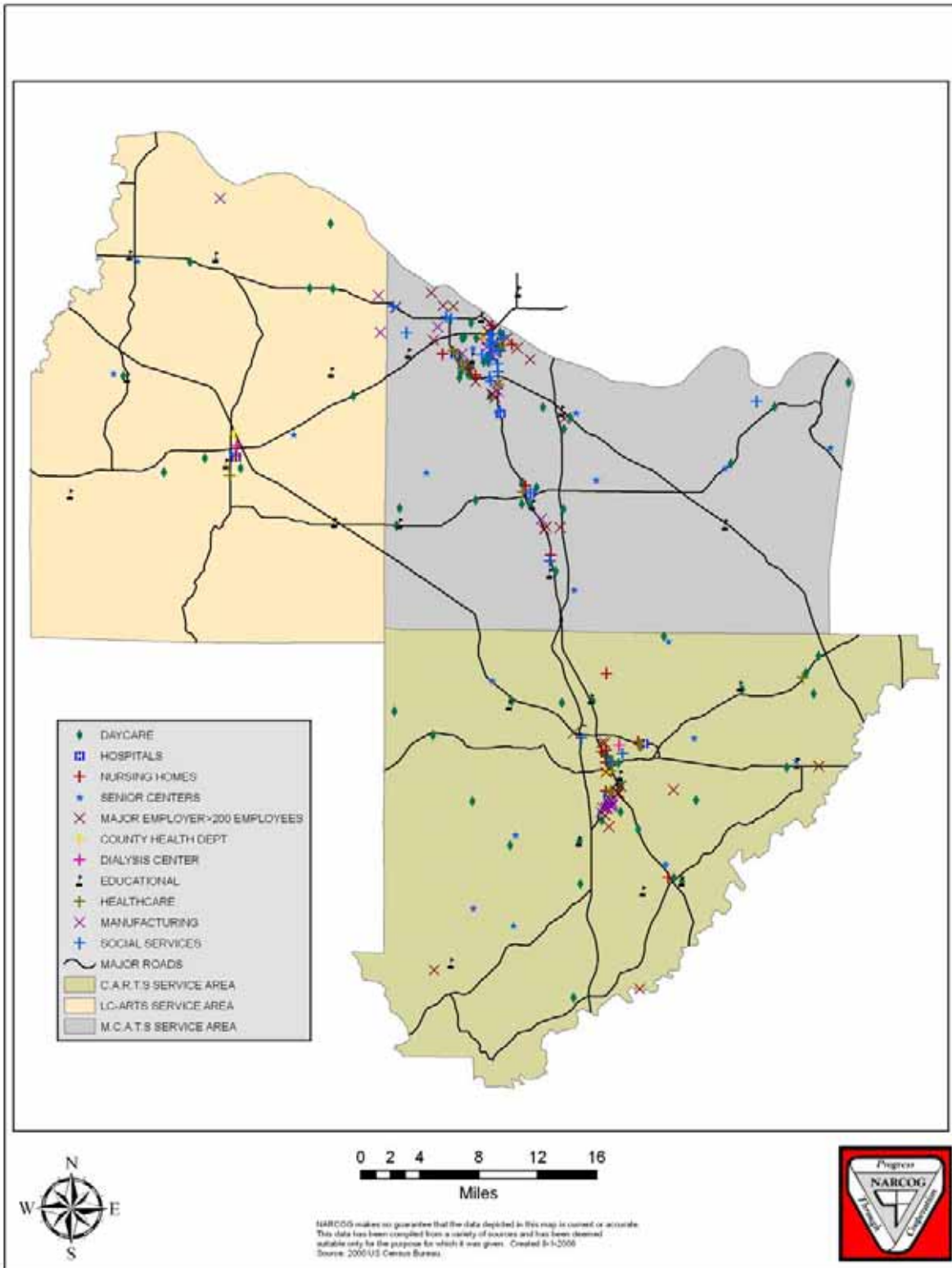
| Agency                                    | County   | Agency                                     | County   |
|---|----------|--|----------|
| CARTS                                     | Cullman  | Cullman County Commission                  | Cullman  |
| Town of Priceville                        | Morgan   | MCATS                                      | Morgan   |
| LC-ARTS                                   | Lawrence | Lawrence County Commission                 | Lawrence |
| City of Cullman                           | Cullman  | Morgan County Commission                   | Morgan   |
| City of Moulton                           | Lawrence | Town of Baileyton                          | Cullman  |
| City of Decatur                           | Morgan   | Town of Colony                             | Cullman  |
| City of Hartselle                         | Morgan   | Town of Dodge City                         | Cullman  |
| City of Fairview                          | Cullman  | Town of Vinemont                           | Cullman  |
| Town of Garden City                       | Cullman  | Town of West Point                         | Cullman  |
| Town of Good Hope                         | Cullman  | Town of Courtland                          | Morgan   |
| Town of Hanceville                        | Cullman  | Town of Hillsboro                          | Morgan   |
| Town of Holly Pond                        | Cullman  | Town of North Courtland                    | Morgan   |
| Town of Town Creek                        | Morgan   | Town of Falkville                          | Morgan   |
| Town of Eva                               | Morgan   | Town of Somerville                         | Morgan   |
| Lawrence County Airport                   | Lawrence | Folsom Field Airport                       | Cullman  |
| Decatur/Athens Airport Authority          | Morgan   | Roundtree Field Airport                    | Morgan   |
| A-1 Decatur Taxi Company                  | Morgan   | Gold Cab                                   | Morgan   |
| Alabama Medical Agency                    | Morgan   | River City Cab                             | Morgan   |
| United Way of Morgan County               | Morgan   | Easter Seals Society of Cullman County     | Cullman  |
| United Way of Cullman County              | Cullman  | United Way of Lawrence                     | Lawrence |
| Morgan County Food Stamp Office           | Morgan   | First United Methodist Church of Hartselle | Morgan   |
| Social Security Administration            | Cullman  | Cullman Regional Medical Center            | Cullman  |
| Woodland Medical Center                   | Cullman  | Baptist Lawrence Medical Center            | Lawrence |
| Decatur General Hospital                  | Morgan   | Hartselle Medical Center                   | Morgan   |
| North Alabama Regional Hospital           | Morgan   | Parkway Medical Center Hospital            | Morgan   |
| Decatur Morgan County Chamber of Commerce | Morgan   | Hartselle Chamber of Commerce              | Morgan   |
| Cullman Area Chamber of Commerce          | Cullman  | Lawrence County Chamber of Commerce        | Lawrence |
| Wallace State Community College           | Cullman  | John C. Calhoun Community College          | Morgan   |
| Veterans Service Office                   | Cullman  | Veterans Service Office                    | Lawrence |
| Cullman County Food Stamp Office          | Cullman  | Lawrence County Dept. of Human Resources   | Lawrence |
| Cullman County Dept. of Human Resources   | Cullman  | Cullman County Board of Education          | Cullman  |
| Cullman City Board of Education           | Cullman  | Lawrence County Board of Education         | Lawrence |
| Cullman County Health Dept.               | Cullman  | Lawrence County Dept. of Health            | Lawrence |
| Morgan County Dept. of Health             | Morgan   | American Red Cross                         | Morgan   |
| American Red Cross                        | Cullman  | The Salvation Army                         | Morgan   |
| Committee on Church Cooperation           | Morgan   | Community Action Partnership of N. Ala,    | Morgan   |
| Decatur City Board of Education           | Morgan   | Decatur Youth Enrichment Association       | Morgan   |
| Hartselle City Board of Education         | Morgan   | Morgan County Board of Education           | Morgan   |

|  |          |   |           |
|--|----------|---|-----------|
| Morgan County Dept of Human Resources          | Morgan   | Neighborhood Christian Center                   | Morgan    |
| Social Security Administraion                  | Morgan   | Volunteer Center of Morgan County               | Morgan    |
| City of Decatur, Youth Services Dept.          | Morgan   | Committee on Church Cooperation                 | Cullman   |
| Community Action Partnership of N. Ala         | Cullman  | Veterans Service Office                         | Morgan    |
| Morgan County Parks & Recreation Dept.         | Morgan   | Cullman City Parks & Recreation Dept.           | Cullman   |
| Hartselle Parks & Recreation                   | Morgan   | Moulton Parks & Recreation                      | Lawrence  |
| Housing Authority of the City of Decatur       | Morgan   | Housing Authority of the City of Hartselle      | Morgan    |
| Cullman Housing Aauthority                     | Cullman  | Regional Housing Authority of Cullman           | Cullman   |
| City of Moulton Housing Authority              | Lawrence | City of Decatur Community Development Dept.     | Morgan    |
| Alabama Baptist Children's Homes               | Morgan   | Alabama Sheriff's Youth Ranches, Inc.           | Morgan    |
| Big Brothers/Big Sisters of Morgan County      | Morgan   | Boys and Girls Clubs of Decatur, Inc.           | Morgan    |
| Hartselle Senior Center                        | Morgan   | Hatton Senior Center                            | Lawrence  |
| Lacey's Spring Senior Center                   | Morgan   | Moulton Senior Center                           | Lawrence  |
| Morgan City Senior Center                      | Morgan   | North Courtland Senior Center                   | Lawrence  |
| Neel Senior Center                             | Morgan   | Town Creek Senior Center                        | Lawrence  |
| Somerville Senior Center                       | Morgan   | Caddo Senior Center                             | Lawrence  |
| Turner-Surles Senior Community Resource Center | Morgan   | Public Park & RecreationBoard of Cullman County | Cullman   |
| Decatur City Park & Recareation Dept.          | Morgan   | Community Services Planning Council             | Morgan    |
| Town of Trinity                                | Morgan   | Cullman Senior Center                           | Cullman   |
| Cullman County COA                             | Cullman  | Hanceville Senior Center                        | Cullman   |
| Lawrence County COA                            | Lawrence | Holly Pond Senior Center                        | Cullman   |
| Morgan County COA                              | Morgan   | West Point Center for Retirees & Seniors        | Cullman   |
| Brushy Pond Senior Center                      | Cullman  | Eva Senior Center                               | Morgan    |
| Colony Senior Center                           | Cullman  | Falkville Senior Center                         | Morgan    |
| Crane Hill Senior Center                       | Cullman  | Florette Senior Center                          | Morgan    |
| PACT   | Morgan   | Terrell Industries                              | Morgan    |
| Tennessee Valley Rehabilitation Center Inc     | Morgan   | Volunteer Center of Morgan County               | Morgan    |
| Vocational Rehabilitation Services             | Morgan   | Decatur Morgan County Seniors                   | Morgan    |
| Decatur Career Center                          | Morgan   | Cullman Career Link                             | Cullman   |
| Volunteer Center of Cullman                    | Cullman  | Cullman Area Mental Health Authority            | Cullman   |
| Cullman Employment Security Office             | Cullman  | Mental Health Association                       | Morgan    |
| Mental Health Association                      | Cullman  | The Kid One Transport System Inc                | Jefferson |
| The ARC of Morgan County                       | Morgan   | Dialysis Clinic                                 | Morgan    |
| Bill Stewart Adult Activity Center             | Lawrence | Dialysis Clinic, Inc./ Moulton                  | Lawrence  |
| Volunteers of America, North Alabama           | Madison  | Bethel Baptist School                           | Morgan    |
| Dialysis Clinic, Inc                           | Cullman  | Decatur Heritage Christian Academy              | Morgan    |
| Meals-On-Wheels                                | Morgan   | Lawrence County Christian School                | Lawrence  |
| Cornerstone Christian School                   | Morgan   | Sacred Heart School                             | Cullman   |
| St. Ann's Catholic School                      | Morgan   | St. Paul's Lutheran Church School, LCMS         | Cullman   |
| Ability Plus Inc.                              | Madison  | Mt. Hope Nutrition Center                       | Lawrence  |
| Cullman Health Care Center                     | Cullman  | Cullman LTC and Rehab (Folsom)                  | Cullman   |

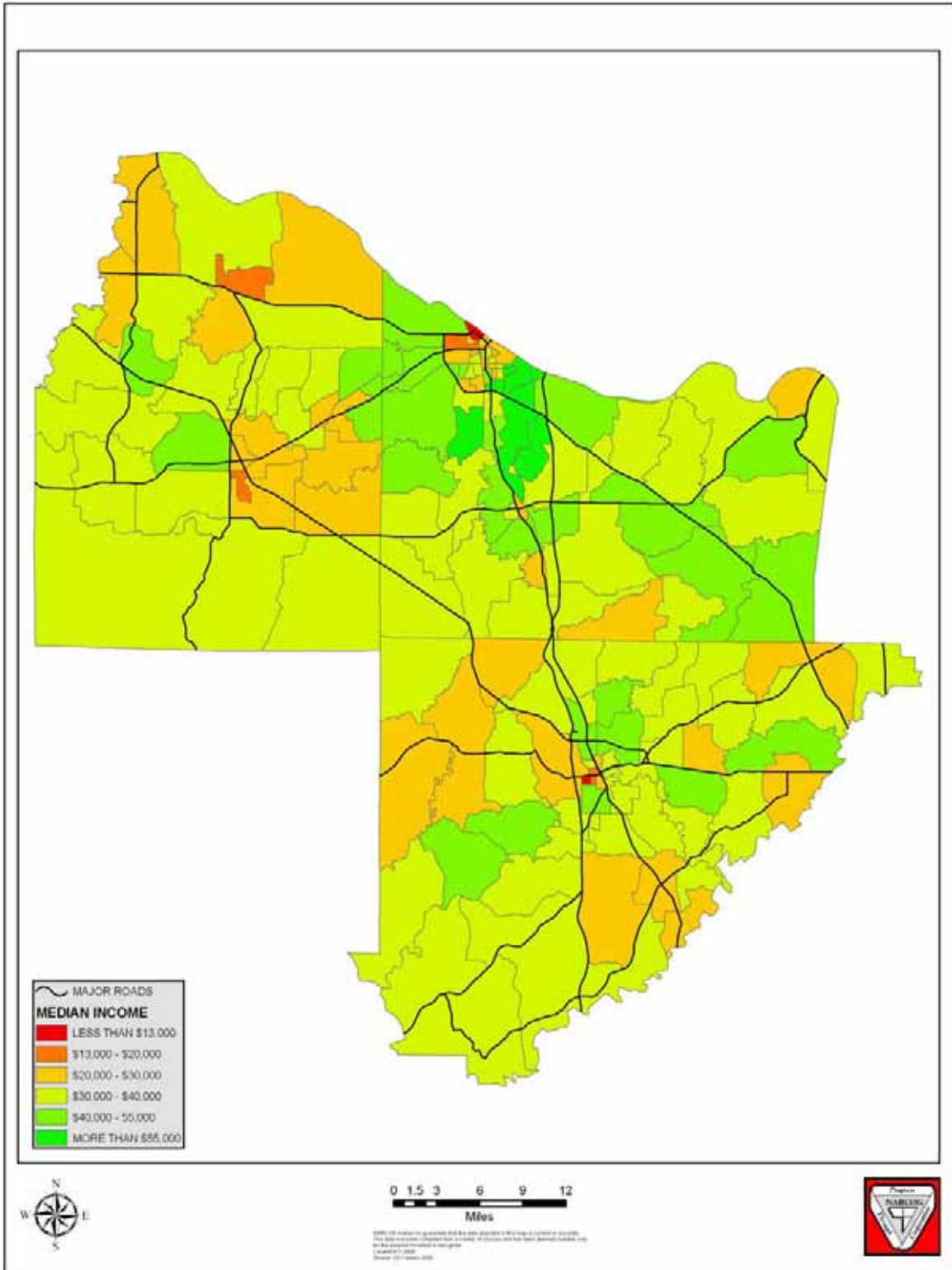
|                              |          |                                   |         |
|------------------------------|----------|-----------------------------------|---------|
| Hanceville Nursing Home      | Cullman  | Woodland Village Health Care      | Cullman |
| Falkville Health Care Center | Morgan   | Decatur Health and Rehab          | Morgan  |
| Summerford Nursing Home      | Morgan   | Sunbridge Care and Rehabilitation | Morgan  |
| NHC Healthcare               | Lawrence | Country Living, Inc               | Cullman |
| Morningside of Cullman       | Cullman  | Victorian Manor                   | Cullman |
| Woodland House               | Cullman  | Cedar Springs                     | Morgan  |
| Sierra Springs               | Morgan   | Country Cottage                   | Morgan  |
| Morningside of Decatur       | Morgan   | The Terrace at Priceville         | Morgan  |

**Maps**

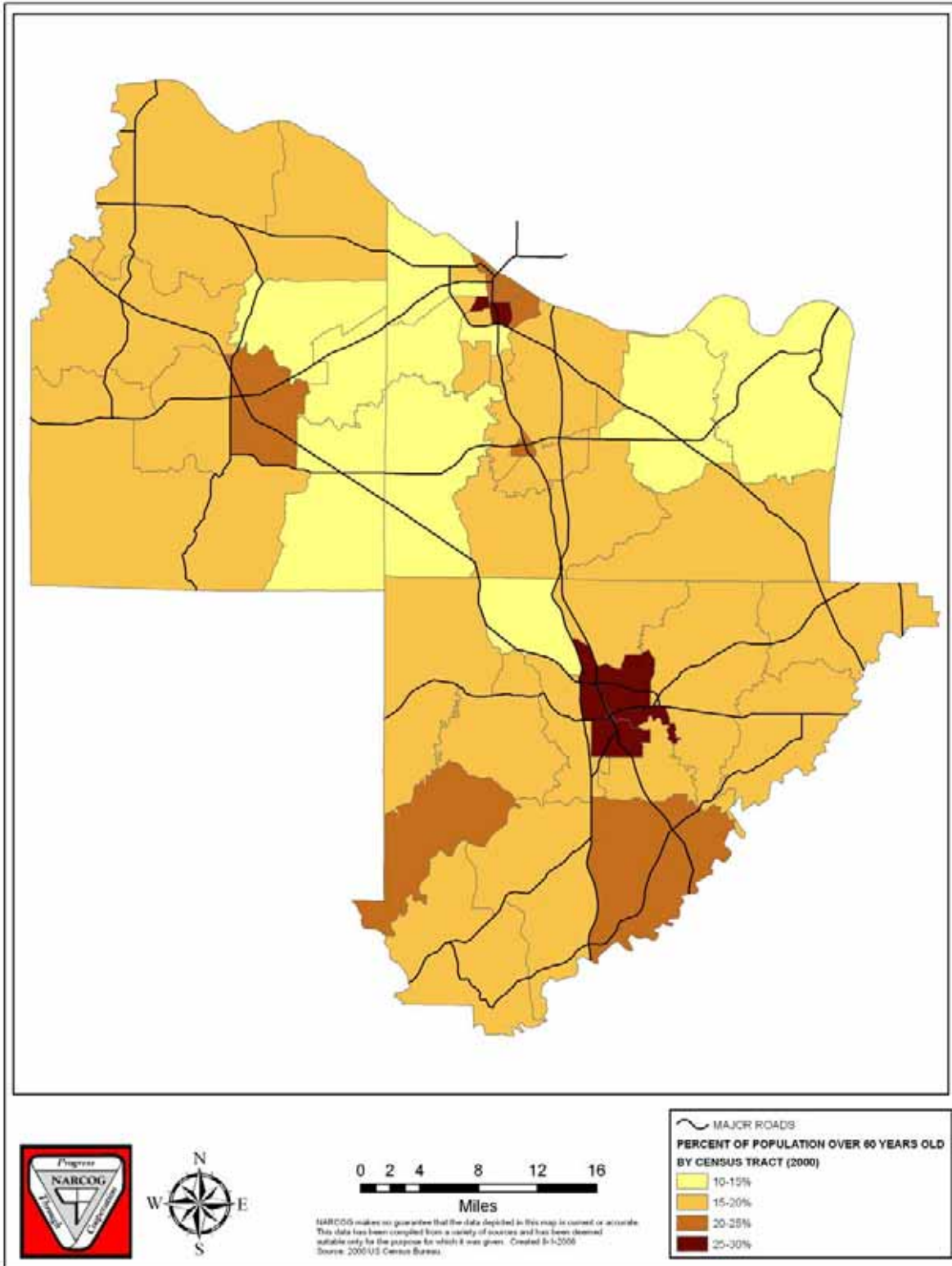
**Public Transportation Origins and Destinations**



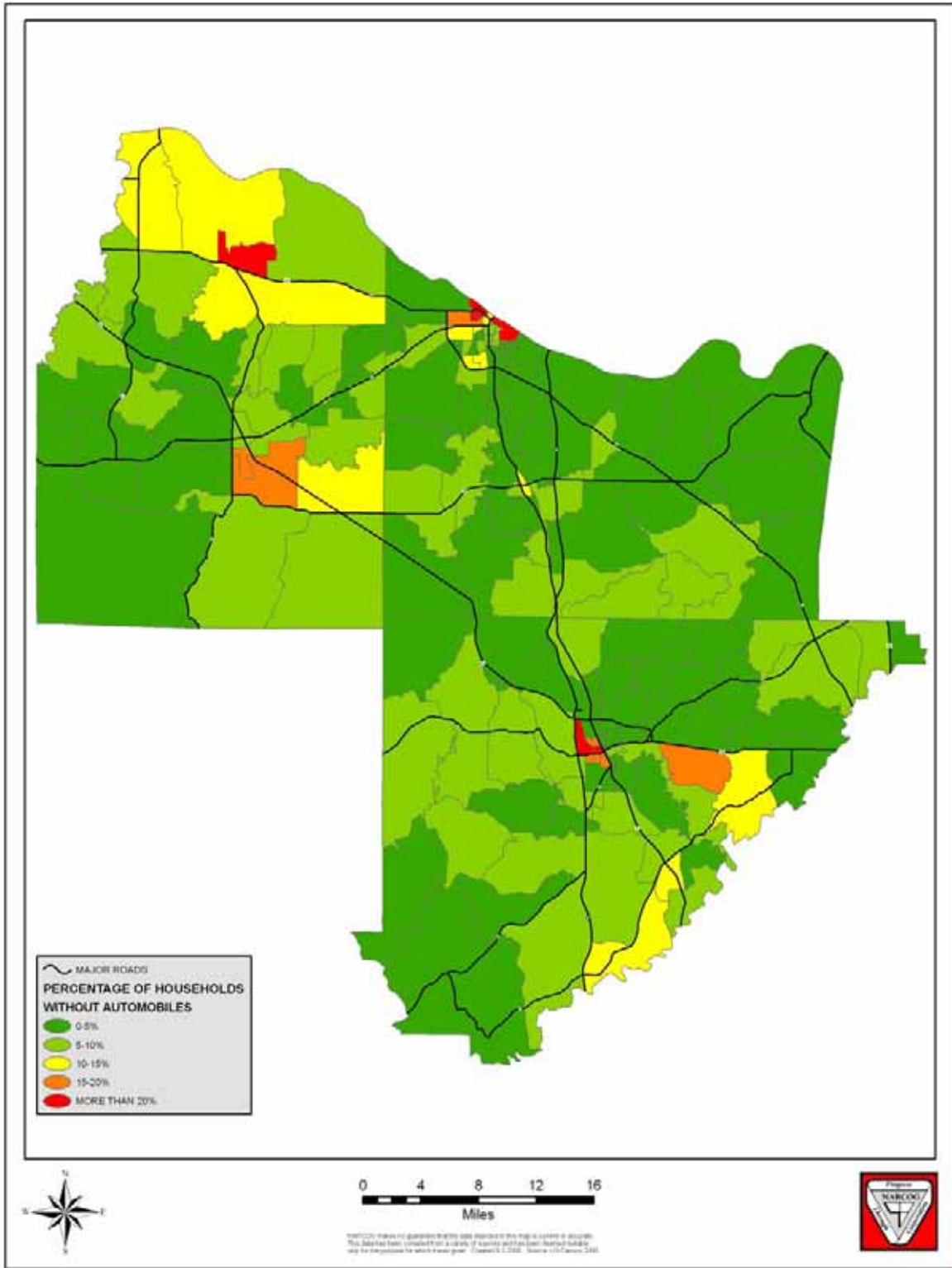
# Median Household Income



# Percentage of Population over 60



# Percentage of Homes Without an Automobile



## RESOLUTION

### ENDORSEMENT OF THE FISCAL YEAR 2009 HUMAN SERVICES COORDINATED TRANSPORTATION PLAN UPDATE

WHEREAS, the staff of the North-Central Alabama Regional Council of Governments, in cooperation with the Transportation Planning Modal Programs Bureau of the Alabama Department of Transportation has prepared an Updated Human Services Coordinated Transportation Plan and;

WHEREAS, the document has been prepared in accordance with the requirements of the Safe, Accountable, Flexible, Efficient, Transportation Equity Act: A Legacy for users (SAFETEA-LU).

NOW THEREFORE BE IT RESOLVED, that the Board of Directors for the North Central Alabama Regional Council of Governments hereby adopts the attached document as the Fiscal Year 2009 Human Services Coordinated Transportation Plan Update for the NARCOG Region.

Adopted this the 24<sup>th</sup> day of September 2008 by the Board of Directors of the North Central Alabama Regional Council of Governments.

\_\_\_\_\_, Chairman  
North Central Alabama Regional Council of Governments